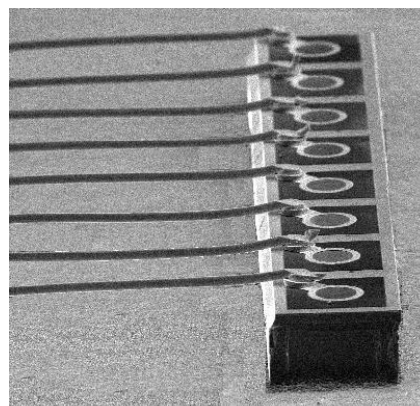


InGaAs Photodiode Array

Features

- Large active area convenient for optical coupling
- Low dark current
- Respond to C-Band and 1310nm, L-Band
- High reliability



Applications

- Laser diode and LED power monitor
- Near infrared sensors
- Power meters
- Optical measurements and sensing

Specifications

Absolute Maximum Ratings

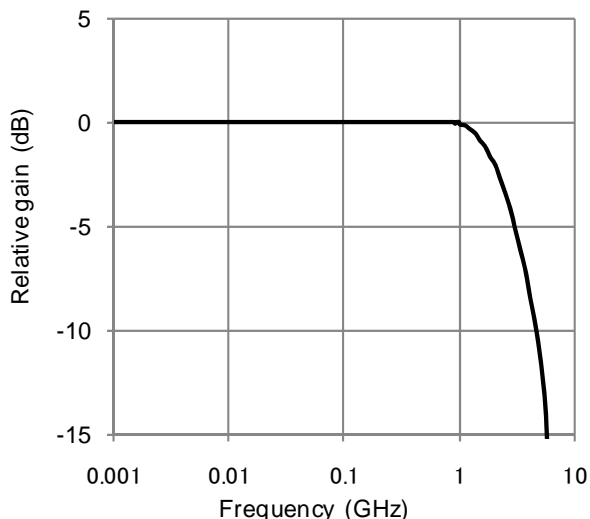
| Parameter | Symbol | Value | Unit |
|-----------------------------|-------------|------------|------|
| Reverse voltage | V_R | 20 | V |
| Maximum optical power input | $P_{i\max}$ | 10 | mW |
| Forward current | I_F | 10 | mA |
| Operating temperature | T_{opr} | -40 to +85 | °C |
| Storage temperature | T_{stg} | -40 to +85 | °C |

Electrical and Optical characteristics (Ta=25°C unless otherwise noted)

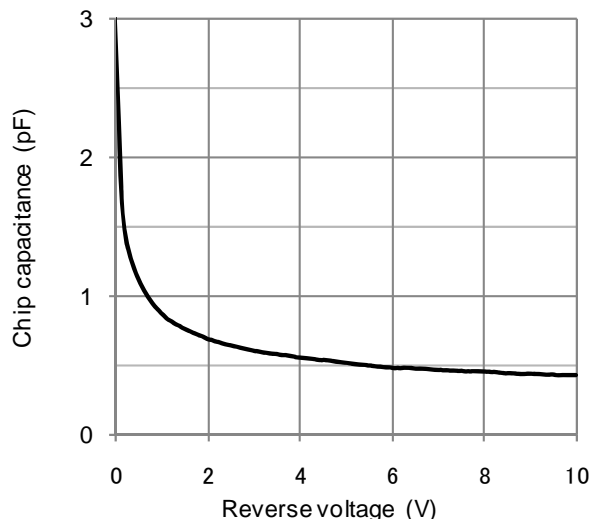
| Parameter | Symbol | Min. | Typ. | Max. | Unit | Conditions |
|------------------|-------------------|------|------|------|------|--|
| Active diameter | D | 80 | | | μm | |
| Bandwidth | BW | 1.0 | 2.0 | | GHz | $P_i=-10\text{dBm}$, small signal modulation, $V_R=5\text{V}$ |
| Responsivity | R | 0.80 | | | A/W | $\lambda=1310\text{nm}$, $V_R=5\text{V}$ |
| | | 0.85 | | | | $\lambda=1550\text{nm}$, $V_R=5\text{V}$ |
| Crosstalk | X | | -35 | | dB | $V_R=5\text{V}$ |
| Dark current | I_D | | 80 | | pA | $V_R=5\text{V}$ |
| Chip capacitance | C_{chip} | | 0.65 | 0.80 | pF | $V_R=5\text{V}$, $f=1\text{MHz}$ |

Specifications are subject to change without notice.

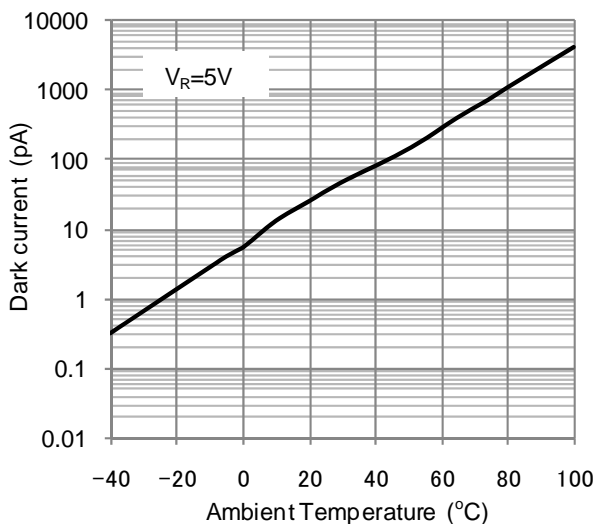
Frequency response



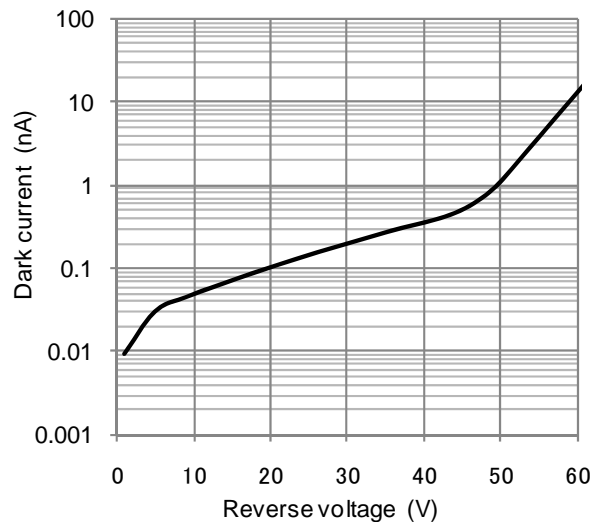
C-V characteristics



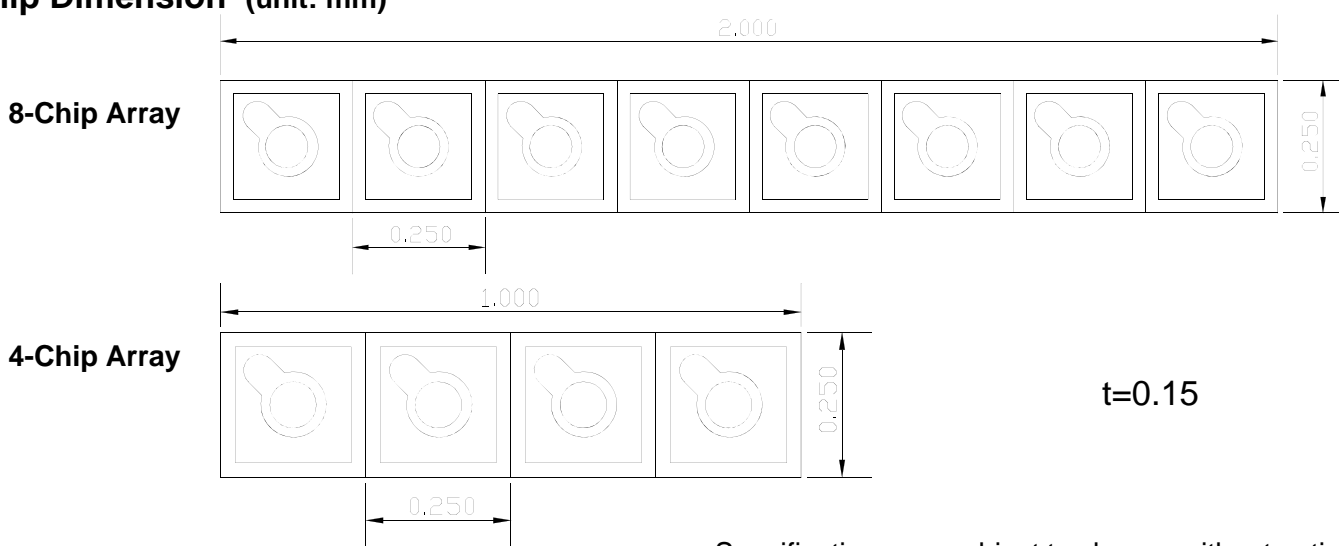
Dark current - ambient temperature



Dark current - reverse voltage



Chip Dimension (unit: mm)



Specifications are subject to change without notice.

Contacts:

www.kyosemi.co.jp / info@kyosemi.co.jp

Kansai Sales Office: 949-2 Ebisu-cho, Fushimi-ku, Kyoto, 612-8201 Japan Tel: +81 75 605 7311 Fax: +81 75 605 7312 (Overseas Sales Dept.)
Tokyo Sales Office: 24th Sky Building, 2nd Floor, 1-34-3 Shinjuku, Shinjuku-ku, Tokyo 160-0022 Japan Tel: +81 3 5312 5360 Fax: +81 3 5312 5367
Eniwa Operation: 385-31 Toiso, Eniwa-shi, Hokkaido 061-1405 Japan Tel: +81 123 34 3111 Fax: +81 123 34 2110
Kyosemi Opto America Corp: 3003 Bunker Hill Lane, Suite 102, Santa Clara, CA 95054 USA Tel: +1 408 492 1486 Fax: +1 408 492 9843

www.kyosemi-opto.com