

1x4 InGaAs 10G PD

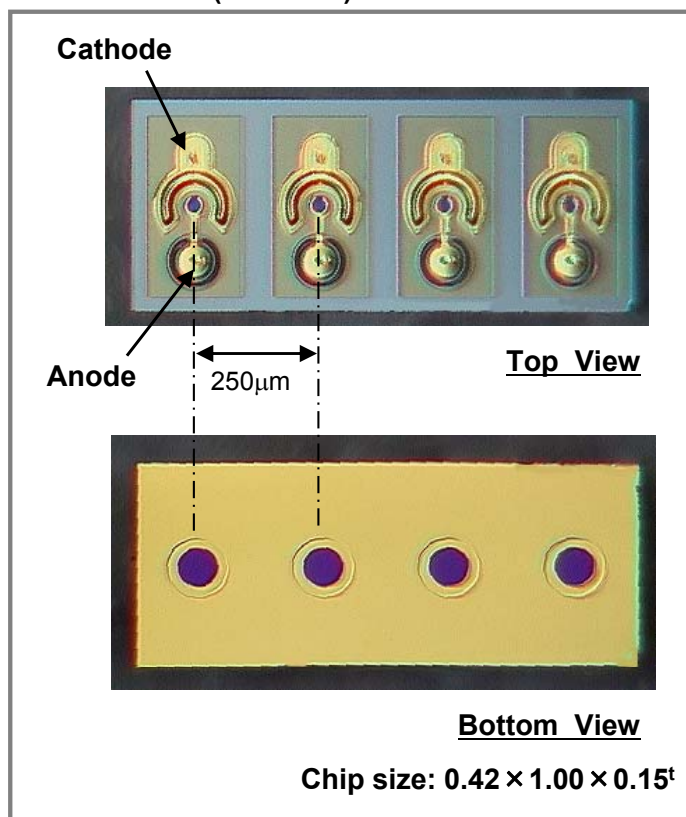
Features

- Low dark current
- High speed
- Back side illuminated

Applications

- Optical interconnection
- 10G Ethernet/Fiber channel

Dimensions (unit: mm)



Specifications

Absolute Maximum Ratings

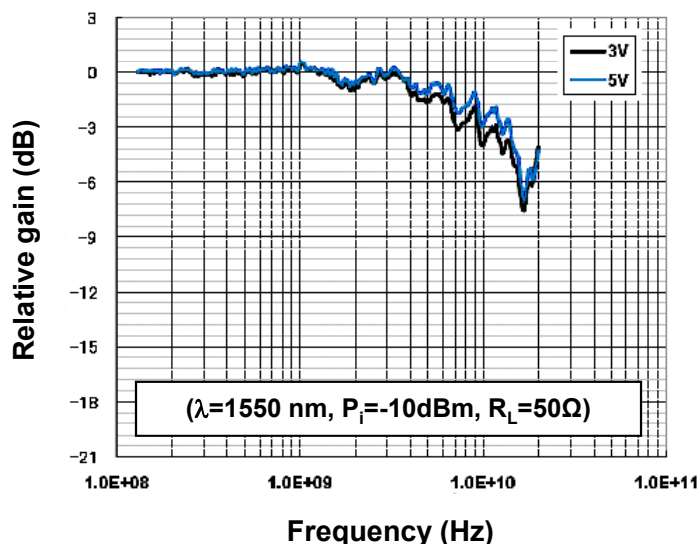
Parameter	Symbol	Value	Unit
Reverse voltage	V_R	15	V
Maximum optical power input	P_{max}	5	mW
Forward current	I_F	10	mA
Operating temperature	T_{opr}	-40 to +85	°C
Storage temperature	T_{stg}	-50 to +125	°C

Electrical and Optical characteristics (Ta=25°C unless otherwise noted)

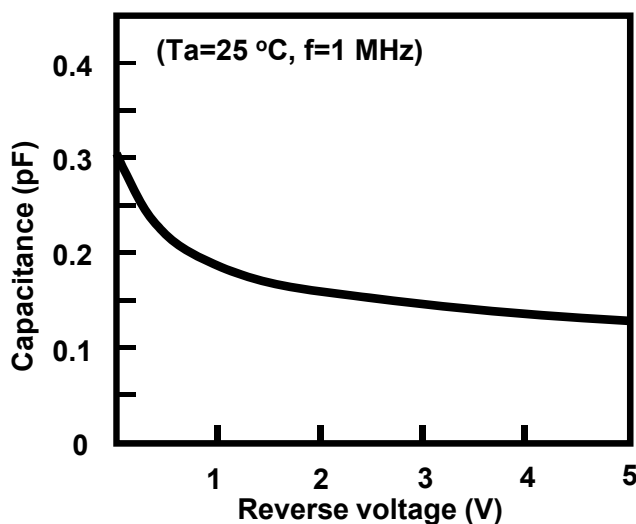
Parameter	Symbol	Min.	Typ.	Max.	Unit	Conditions
Active diameter	D	45			µm	
Bandwidth	BW		10		GHz	$R_L=50\Omega, V_R=5V$
Responsivity	R	0.8	0.95		A/W	$V_R=5V, \lambda=1550nm$
Dark current	I_D		30	200	pA	$V_R=5V$
Total capacitance	C_t		0.15		pF	$V_R=5V, f=1MHz$

Specifications are subject to change without notice.

Frequency response



Capacitance -voltage



Specifications are subject to change without notice.

Contacts:

www.kyosemi.co.jp / info@kyosemi.co.jp

Kansai Sales Office: 949-2 Ebisu-cho, Fushimi-ku, Kyoto, 612-8201 Japan Tel: +81 75 605 7311 Fax: +81 75 605 7312 (Overseas Sales Dept.)

Tokyo Sales Office: 24th Sky Building, 2nd Floor, 1-34-3 Shinjuku, Shinjuku-ku, Tokyo 160-0022 Japan Tel: +81 3 5312 5360 Fax: +81 3 5312 5367

Eniwa Operation: 385-31 Toiso, Eniwa-shi, Hokkaido 061-1405 Japan Tel: +81 123 34 3111 Fax: +81 123 34 2110

Kyosemi Opto America Corp: 3003 Bunker Hill Lane, Suite 102, Santa Clara, CA 95054 USA Tel: +1 408 492 1486 Fax: +1 408 492 9843