

InGaAs PD for 10Gbase-LRM

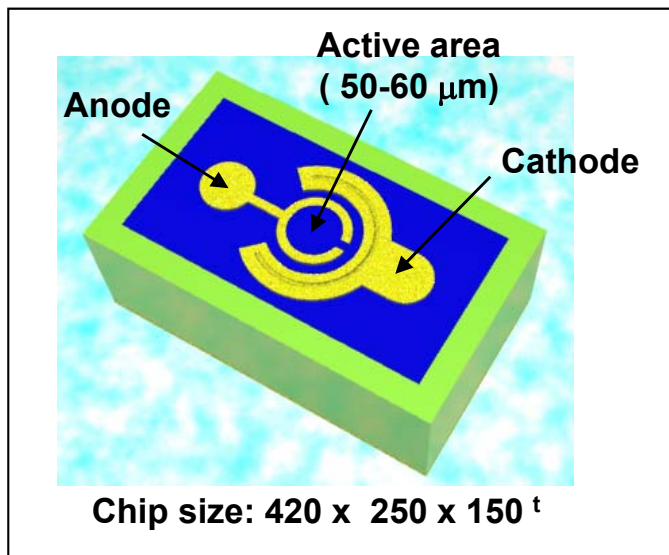
Features

- Low dark current
- Large active area for MMF
- Highly reliable

Applications

- 10Gbase – LRM
- 10G Ethernet/Fiber channel

Dimensions (unit: μm)



Specifications

Absolute Maximum Ratings

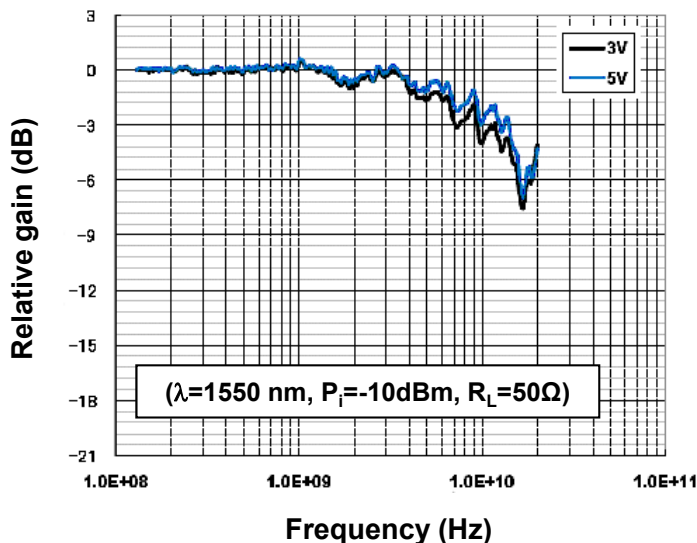
Parameter	Symbol	Value	Unit
Reverse voltage	V_R	15	V
Maximum Optical Power Input	$P_{i\max}$	5	mW
Forward current	I_F	10	mA
Operating temperature	T_{opr}	-40 to +85	$^{\circ}\text{C}$
Storage temperature	T_{stg}	-40 to +85	$^{\circ}\text{C}$

Electrical and Optical characteristics ($T_a=25^{\circ}\text{C}$ unless otherwise noted)

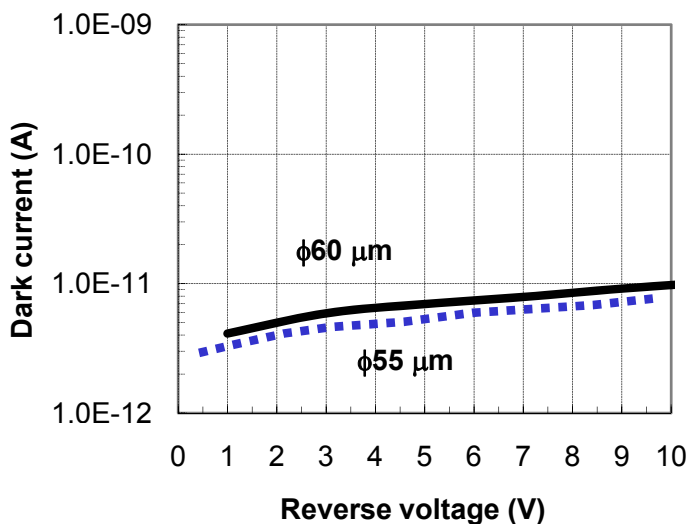
Parameter	Symbol	Min.	Typ.	Max.	Unit	Conditions
Active diameter	D	50 - 60			μm	
Bandwidth	BW	7.0	7.5	10	GHz	$R_L=50\Omega$, $V_R=5V$
Responsivity	R	0.8	0.95		A/W	$V_R=5V$, $\lambda=1550\text{nm}$
Dark current	I_D		10	100	pA	$V_R=5V$
Chip capacitance	C_{chip}		0.35		pF	$V_R=5V$, $f=1\text{MHz}$

Specifications are subject to change without notice.

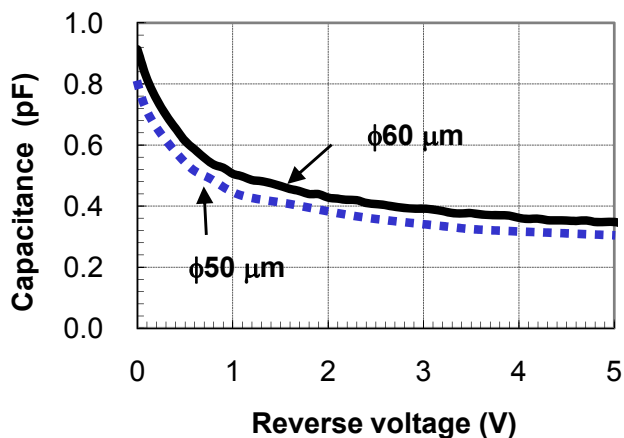
Frequency response



Current - voltage



Capacitance - voltage



Specifications are subject to change without notice.

Contacts:

www.kyosemi.co.jp / info@kyosemi.co.jp

Kansai Sales Office: 949-2 Ebisu-cho, Fushimi-ku, Kyoto, 612-8201 Japan Tel: +81 75 605 7311 Fax: +81 75 605 7312 (Overseas Sales Dept.)

Tokyo Sales Office: 24th Sky Building, 2nd Floor, 1-34-3 Shinjuku, Shinjuku-ku, Tokyo 160-0022 Japan Tel: +81 3 5312 5360 Fax: +81 3 5312 5367

Eniwa Operation: 385-31 Toiso, Eniwa-shi, Hokkaido 061-1405 Japan Tel: +81 123 34 3111 Fax: +81 123 34 2110

Kyosemi Opto America Corp: 3003 Bunker Hill Lane, Suite 102, Santa Clara, CA 95054 USA Tel: +1 408 492 1486 Fax: +1 408 492 9843